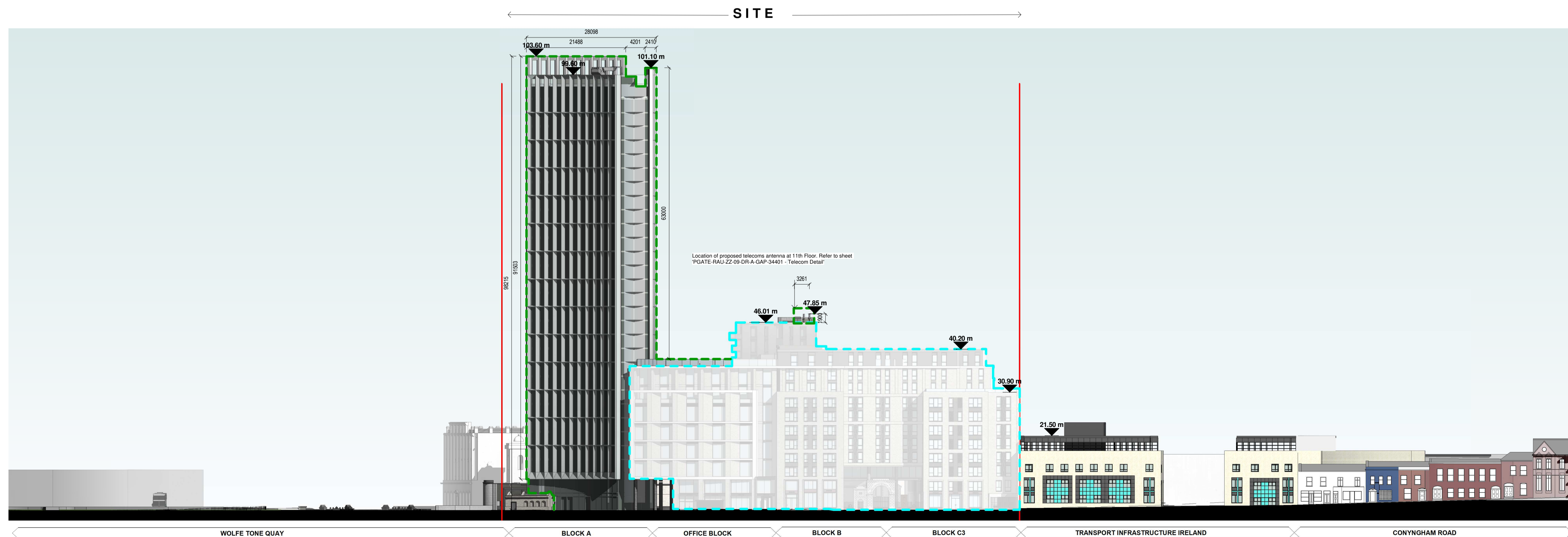


South Elevation - Contiguous

1 : 500

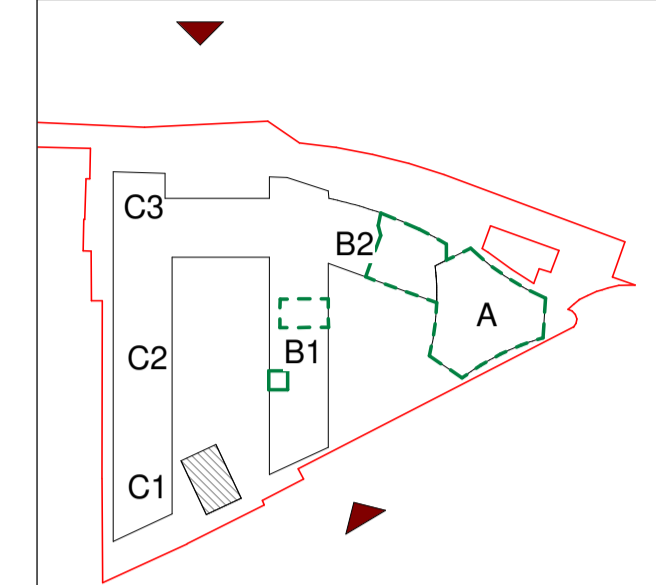


North Elevation - Contiguous

1 : 500

Notes:
DO NOT SCALE FROM THIS DRAWING. USE FIGURED DIMENSIONS IN ALL CASES. VERIFY DIMENSIONS ON SITE AND REPORT ANY DISCREPANCIES TO THE ARCHITECTS IMMEDIATELY. THIS DRAWING TO BE READ IN CONJUNCTION WITH THE ARCHITECTS SPECIFICATION. © THIS DRAWING IS COPYRIGHT AND MAY ONLY BE REPRODUCED WITH THE ARCHITECTS PERMISSION.

OSI License Number - AR 005219
Projection / Spatial Reference:
Projection: IRENET1999, Transverse_Mercator
Centre Point Coordinates:
X,Y: 71957.3099,73403.2446
Reference Index:
Map Series / Map Sheets
1:1,000 | 3263-02
1:1,000 | 3263-08
1:1,000 | 3263-07
1:1,000 | 3263-03
Vertical Datum:
MALIN HEAD



Planning Application Legend

Description	Symbol
SITE BOUNDARY LINEDARY	
EXTENT OG PROPSED DEVELOPMENT / WORKS	
CONSENTED BUILDINGS UNDER APPLICATION REF: ABP-306569-20	

Materials Legend

No.	DESCRIPTION
1	POLISHED PRE-CAST GRANITE MIX FACADE
2	POLISHED PRE-CAST GRANITE CILL
3	POWDER-COATED ALUMINIUM WINDOW

P02	01/06/21	JB	Planning Issue
P01	02/12/20	DZ	Pre-Planning Issue

Rev	Date	DRN	Description

IN ASSOCIATION WITH
Glenn Howells Architects
Birmingham London glennhowells.co.uk
Glenn Howells Architects 321 Bedford Street Birmingham B5 6ET T: +44 (0)121 666 7640 W: www.glennhowells.co.uk E: mail@glennhowells.co.uk

Client Details:
Ruiside Developments Ltd.

Project Details:
PGATE
42A Parkgate Street, Dublin 8

Drawing Title:
Proposed Contiguous Elevations

Job No P18-107D	Date 01/06/21	Scale@A1 1:500
Status Planning	Drawn By: M.McGuire	Checked By: E.O'Brien
Purpose Planning Permission	Drawing Number PGATE-RAU-ZZ-ZZ-DR-A-ELE-32008	Revision P02